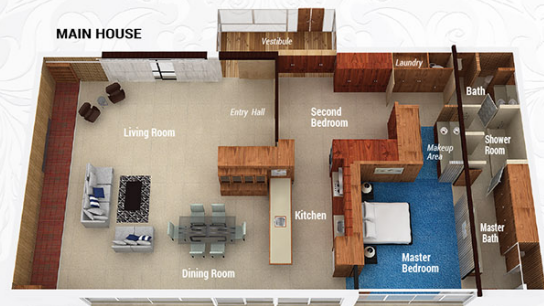


3D DOLLHOUSE VIEW



MAIN HOUSE



GUEST HOUSE

3D FLOOR PLAN

Jerry Sun's
2017 Real Estate Agent

FIVE STAR PROFESSIONAL

歡迎關注孫偉瑋專業地產團隊
微信公眾帳號: jerrysunteam

Official Account



833 Wildrose Ave, Monrovia



www.833Wildrose.com



RE/MAX PREMIER PROPERTIES EACH OFFICE INDEPENDENTLY OWNED AND OPERATED 913 E. WALNUT ST, PASADENA, CA 91106

ALL MEASUREMENTS AND FIGURES ARE APPROXIMATE. THE INFORMATION CONTAINED IN THIS FLYER HAS BEEN SECURED FROM SOURCES WE BELIEVE TO BE RELIABLE, BUT LISTING AGENT AND RE/MAX PREMIER PROPERTIES MAKE NO REPRESENTATIONS FOR GUARANTEE, EXPRESSED OR IMPLIED, AS TO THE ACCURACY OF THIS INFORMATION. THE BROKER DOES NOT GUARANTEE THE ACCURACY OF SQUARE FOOTAGE, LOT SIZE, OR OTHER INFORMATION CONCERNING THE CONDITION OR FEATURES OF THE PROPERTY PROVIDED BY THE SELLER OR OBTAINED FROM PUBLIC RECORDS OR OTHER SOURCES, AND THE BUYER IS ADVISED TO INDEPENDENTLY VERIFY THE ACCURACY OF THAT INFORMATION THROUGH PERSONAL INSPECTION AND WITH APPROPRIATE PROFESSIONALS. ALL PICTURES HAVE BEEN COMPUTER ENHANCED AND/OR ALTERED BY @JERRY SUN'S HOME SELLING TEAM 2018.



RE/MAX PREMIER PROPERTIES Broker DRE#01379606

Jerry Sun 孫 626.589.0997 www.jerrysun.com ChineseBuyLA.com 中文網站

DRE#01338788 626.602.3978 jerrysun@remax.net 913 E. Walnut St, Pasadena

f t s s y t i n s ID: jerrytsun





LIVING ROOM



KITCHEN



DINING ROOM



MASTER BEDROOM



MASTER BATHROOM



SECOND BEDROOM

SECOND BATHROOM

THIS BEDROOM PHOTO HAVE BEEN VIRTUALLY STAGED



GUEST HOUSE-BEDROOM



GUEST HOUSE-LIVING ROOM



GUEST HOUSE-KITCHENETTE



GUEST HOUSE-BATHROOM



MAIN HOUSE - 2 BEDROOMS + 2 BATHROOMS / GUEST HOUSE - 1 BEDROOM + 3/4 BATHROOM

[PER ASSESSOR'S RECORD]



3 BEDROOMS



2.75 BATHROOMS



2,665 SQ.FT.



16,280 SQ.FT.



1965



CARPOT



POOL



FIREPLACE

This historical landmark mid-century modern style single family home is situated in the prestigious Wilrose neighborhood of Monrovia. The home boasts a beautifully landscaped front yard, and a large carport parking area with an oversized driveway offers plenty of parking for car owners and their guests. The new owner will enjoy this ideally positioned home with every living convenience within easy reach. It is very close to schools, banks, several local recreation parks, historical museum, public library and Old Town Monrovia with a variety of restaurants, retail stores, cafes, all the essential shops, and leisure activities nearby.

This distinctive constructed home evidenced in its detailed woodwork with ample floor-to-ceiling glass windows and flowing open floor plan, clearly showcases the artistic craftsmanship of a bygone era that is rarely seen in contemporary constructed homes. The house was designed and built by the original owner who was a notable Japanese architect. The porch landing and glass-enclosed vestibule with double doors that lead into this unique home and the atmosphere of the 1965 era house immediately catch your attention, boasting its original character and grace with classic architectural styling.

The entirely open plan living area links the living room, dining room and kitchen. It is highlighted by wood-exposed beam high ceilings, and the surrounding windows illuminate the interior with an abundance of natural light. The large space is flawlessly designed to entertain guests or simply for relaxation, presenting a living environment of simplicity and minimalism.

You'll love the sense of warmth and the gracious atmosphere that radiate in the living room. It has a large fireplace, wood panel wall with walnut veneer hidden cabinets and built-in shelves. The gourmet kitchen is well appointed with ample cabinetry, recessed lighting, and a breakfast counter, making it a comfortable workspace to fulfill any cook's needs. You can enjoy your morning coffee and make a homemade dinner in the adjacent dining room.

The main house consists of two cozy bedrooms and two bathrooms. The master bedroom features a makeup area with ample closet, offering a retreat from the stresses of everyday living and refreshing with inspiration. The master bathroom contains a dual sink vanity with abundant closet. The second bedroom features a redwood drop ceiling and an ensuite bathroom. Both bedrooms also share a separate shower room with double open terrazzo tile shower and a built-in sunken tub. There is a guest house featuring a living room, kitchenette, bedroom and bathroom, perfect for hosting guests and providing unparalleled privacy.

Enjoy the fantastic backyard, which is complete with a large sparkling pool, surrounded by flourishing native plants and tall trees. The fabulous outdoor space offers a pleasant area for growing a flower garden or ultimate relaxation space, with ample scope for limitless potential creative enhancement. This remarkable home is looking for a new owner who will delight in living in a historic architecture setting and genuinely appreciate its unique charm. Don't miss out on this excellent opportunity to take pleasure in living comfortably.

歡迎到中英文雙語內容房屋專屬網站: www.833Wildrose.com 有親臨實地3D實景互動看屋/視頻影片加語音導覽/3D立體格局視圖及剖面圖有更多角度/中英文房屋詳細介紹/空拍照片/專業照片/地圖及更多資訊。我們提供的3D立體格局視圖皆根據實際擺設及格局繪製僅供參考用,本公司或代理經紀人 不提供任何形式上的保證請自行核實) 預約看屋或您想賣房買房請找瑞傑專業團隊, Jerry 孫 626.589.0997

View more photos, please visit
www.833Wildrose.com