



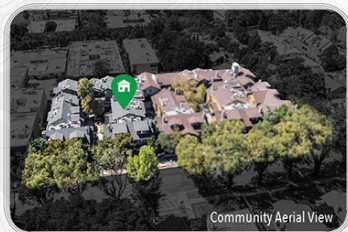
3D
FLOOR
PLAN



MAIN LEVEL



UPPER LEVEL



Community Aerial View

3D DOLLHOUSE VIEW



ALL MEASUREMENTS AND FIGURES ARE APPROXIMATE. THE BROKER DOES NOT GUARANTEE THE ACCURACY OF SQUARE FOOTAGE, LOT SIZE, OR OTHER INFORMATION CONCERNING THE CONDITION OF FEATURES OF PROPERTY PROVIDED BY SELLER OR OBTAINED FROM PUBLIC RECORDS OR OTHER SOURCES, AND THE BUYER IS ADVISED TO INDEPENDENTLY VERIFY THE ACCURACY OF THAT INFORMATION THROUGH PERSONAL INSPECTION AND WITH APPROPRIATE PROFESSIONALS. PICTURES HAVE BEEN COMPUTER ENHANCED AND/OR ALTERED. YOUR 3D FLOOR PLAN RENDERING ARE PROVIDED FOR INFORMATION AND REFERENCE ONLY. THE LISTING AGENT OR REMAX PREMIER PROPERTIES MAKE NO WARRANTY. FOR INDEPENDENT PROPERTY SIZE, LAYOUT, DIMENSIONS, ANY DETAILS, VERIFICATION IS RECOMMENDED.

RE/MAX PREMIER PROPERTIES EACH OFFICE INDEPENDENTLY OWNED AND OPERATED



801 Meridian Ave. # S, South Pasadena



www.801Meridian.com



RE/MAX
PREMIER PROPERTIES
Broker DRE#01379606

📞 Jerry Sun 孫
📞 626.589.0997
🌐 www.jerrysun.com
🌐 ChineseBuyLA.com 中文網站

📞 DRE#01338788
📞 626.602.3978
📧 jerrysun@remax.net
📍 224 N. Lake Ave, Pasadena

📱 ID: jerrytsun





LIVING ROOM



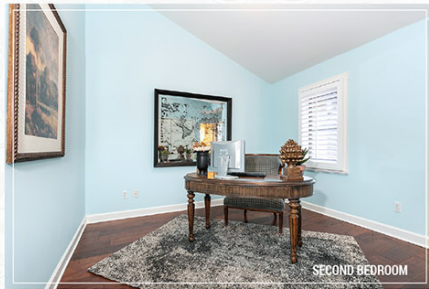
KITCHEN



MASTER BEDROOM



DINING ROOM



SECOND BEDROOM



MASTER BATHROOM



SECOND BATHROOM



BATHROOM

BALCONY



(PER ASSessor's RECORD)



2 BEDROOMS



2.5 BATHROOMS



1,265 SQ.FT.



2-ASSIGNED PARKING



2005



IN-UNIT



\$393.73/MONTH



BALCONY



SOUTH PASADENA UNIFIED

This Craftsman-style condo complex is ideally situated in a highly desirable South Pasadena Central neighborhood, with access to the national Gold Ribbon award-winning South Pasadena Unified School district. Experience the urban lifestyle coupled with characteristics and many living conveniences of this walkable neighborhood, centrally located near great schools, public library, banks, Trader Joe's, retail shops, restaurants, vibrant cafes, farmer's market, golf course, local recreation parks (Orange Grove Park, Garfield Park, Arroyo Park, Arroyo Seco Park), and the historic Mission West district shopping and dining precinct. It is also commuter friendly with easy linkage to 110 freeways, public transportation, and Metro Gold Line to DTLA.

This Mission Meridian Village complex provides its residents with a lush landscaping center garden courtyard with a water fountain offering a tranquil atmosphere, controlled access to subterranean parking, and easy elevator access. This unit interior features 2 bedroom suites and 2.5 bathrooms, a living room, kitchen, and dining room, combining for approximately 1,265 square feet of living space. The property also features central A/C, high vaulted ceilings, a fireplace, skylight, in-unit laundry, engineering wood flooring, tile flooring, base molding, and assigned 2-car tandem parking.

Enjoy gathering in the inviting living room graced by a mosaic tiled gas fireplace with mantle, or step outside to the enclosed covered balcony that overlooks the community courtyard for peaceful contemplation. The comfortable living areas are suitable for casual entertaining or simply relaxation. A powder bathroom is also located on the main level.

The gourmet kitchen offers ample cabinetry, stainless steel appliances, black quartz stone countertops and backsplash, tile flooring, making the kitchen a comfortable workspace. It opens to the adjacent light-filled dining room, perfect for intimate homemade dinners with family.

There are two nice-sized bedroom suites with high vaulted ceilings that enhance the room with openness and spacious look, a laundry area conveniently located on the upper level. The master suite has a walk-in closet and an additional wardrobe. The second suite has a skylight. The functional layout is also a perfect live/work space for at-home professionals. Both bedrooms have their own bathrooms.

If you desire a lifestyle abundant in arts and culture, this is the perfect home for you. This home combines the simplicity of planning with everyday living. It is superbly situated to take advantage of unlimited shopping, entertainment, relaxation, and networking opportunities for an effortless lifestyle that the city of South Pasadena offers. Don't miss out on this great opportunity to own this wonderful home.

The home owner association fee (HOA fee and cover details are subject to change without notice, the purchaser would need to verify with the association.)