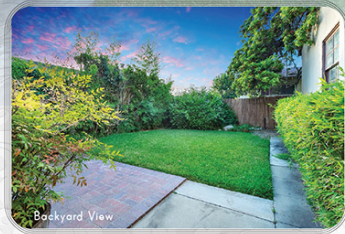




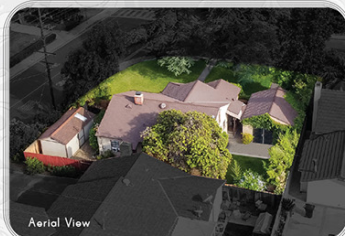
精華地段優質學區 · 繁華商場便利生活 · 靜謐典雅綠意滿庭 · 寬敞庭院翻新良機



Backyard View



Front Porch



Aerial View



GARAGE
BEDROOM



3D DOLLHOUSE VIEW



RE/MAX PREMIER PROPERTIES EACH OFFICE INDEPENDENTLY OWNED AND OPERATED

ALL MEASUREMENTS AND FIGURES ARE APPROXIMATE. THE BROKER DOES NOT GUARANTEE THE ACCURACY OF SQUARE FOOTAGE, LOT SIZE, OR OTHER INFORMATION CONCERNING THE CONDITION OF FEATURES OF PROPERTY PROVIDED BY SELLER OR OBTAINED FROM PUBLIC RECORDS AND THE BUYER IS ADVISED TO INDEPENDENTLY VERIFY THE ACCURACY OF THAT INFORMATION THROUGH PERSONAL INSPECTION AND WITH APPROPRIATE PROFESSIONALS. PICTURES HAVE BEEN COMPUTER ENHANCED AND/OR ALTERED. *OUR 3D FLOOR PLAN RENDERING ARE PROVIDED FOR INFORMATION AND REFERENCE ONLY. THE LISTING AGENT OR REMAX PREMIER PROPERTIES MAKE NO WARRANTY. FOR INDEPENDENT, PROPERTY SIZE, LAYOUT, DIMENSIONS, ANY DETAILS, VERIFICATION IS RECOMMENDED.



9173 Camino Real, San Gabriel

3D SHOWCASE www.9173CaminoReal.com



San Gabriel



📞 Jerry Sun 孫
 📞 626.589.0997
 🌐 www.jerrysun.com
 🌐 ChineseBuyLA.com 中文網站
 📄 DRE#01338788
 📄 626.602.3978
 📧 jerrysun@remax.net
 📄 224 N. Lake Ave, Pasadena

📱 ID: jerrytsun
 📺 📷 📧 📞 📄 📑





LIVING ROOM



KITCHEN



DINING ROOM



FIRST BEDROOM



SECOND BEDROOM



BATHROOM



THIRD BEDROOM



LAUNDRY ROOM

GARAGE/ BEDROOM (Garage Conversion)

THIS LIVING ROOM PHOTO HAVE BEEN VIRTUALLY STAGED FOR A REFERENCE ONLY



-  3 BEDROOMS
-  1 BATHROOM
-  1,372 SQ. FT.
-  1 BEDROOM
-  GARAGE CONVERSION
-  1946
-  FIREPLACE
-  4,974 SQ. FT.
-  PORCH
-  TCUSD
-  LAUNDRY ROOM

This one-story single-family home is located in the prestigious neighborhood of San Gabriel. This corner house is framed by a large front yard with two majestic trees, providing cool shade and energy conservation on warm summer days, and a long driveway capable of accommodating additional parking, and it is easily accessible through two street frontages. It is also assigned to the award-winning Temple City Unified School District.

The home is just bordering the cities of Temple City and Arcadia. You will enjoy this ideally positioned home being associated with many living conveniences nearby. It is just a short stroll to schools, restaurants, retail stores, banks, cafes, supermarkets (Vons, 99 Ranch, H Mart, Trader Joe's, Howie's Market), pharmacies (CVS, Walgreens), retail shops (Burlington, Elm Center Shopping Center, Camellia Square, Westfield Santa Anita Mall), country clubs, leisure activities, and several notable venues (Los Angeles County Arboretum, The Huntington Library, Santa Anita Park, and a live horse racing track).

As you approach the lovely front porch of this mid-century home, the warm ambiance that emanates from it will welcome you. The interior features three bedrooms and one full bathroom, a living room, kitchen, dining room, and laundry room.

You'll love the gracious atmosphere that radiates from the living room, which offers a brick fireplace with a mantel and wall-unit A/C. The oversized five-lite bow windows illuminate the interior with an abundance of natural light, while the original hardwood flooring has been recently resurfaced for a fresh look, which creates a wonderful place to suit all occasions from casual entertaining to simple after-work relaxation.

The arched opening that welcomes you to the dining room is enhanced by a wooden accent wall and a built-in cabinet for display or storage, perfect for the enjoying of homemade meals and gatherings. The chef-friendly kitchen features a breakfast nook with wooden accent wall and simple-to-maintain tile flooring. The laundry room is also conveniently located off the kitchen and has access to the backyard. The home is comprised of one full bathroom with a bathtub and separate shower room, as well as three bedrooms with hardwood flooring. The original detached two-car garage was converted into an additional bedroom with newly installed carpeted flooring.

Spend leisurely afternoons in the private backyard surrounded by flourishing native plants and trees, creating a wonderful outdoor space for entertainment or unlimited relaxation. It also has an extra storage shed in the side yard for your household storage. Don't miss out on this outstanding opportunity to take pleasure in comfy living.

The property just needs some cosmetic fixes and minor upgrades to make this cozy nest suit your needs at an exceptional value, and it is on offer in its as-is current condition. Bring your imagination for the limitless potential of this character-filled glorious home.