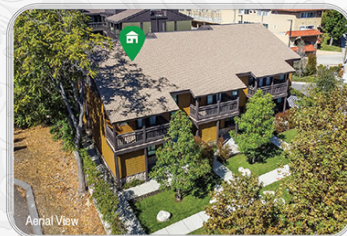




現代工藝風格家居 優質學區交通便捷  
機能格局簡約美學 創造幸福美感旋律



MAIN LEVEL



SECOND LEVEL



3D DOLLHOUSE VIEW



ALL MEASUREMENTS AND FIGURES ARE APPROXIMATE. THE BROKER DOES NOT GUARANTEE THE ACCURACY OF SQUARE FOOTAGE, LOT SIZE, OR OTHER INFORMATION CONCERNING THE CONDITION OF FEATURES OF PROPERTY PROVIDED BY SELLER OR OBTAINED FROM PUBLIC RECORDS OR OTHER SOURCES, AND THE BUYER IS ADVISED TO INDEPENDENTLY VERIFY THE ACCURACY OF THAT INFORMATION THROUGH PERSONAL INSPECTION AND WITH APPROPRIATE PROFESSIONALS. PICTURES HAVE BEEN COMPUTER ENHANCED AND/OR ALTERED. YOUR 3D FLOOR PLAN RENDERING ARE PROVIDED FOR INFORMATION AND REFERENCE ONLY. THE LISTING AGENT OR REMAX PREMIER PROPERTIES MAKE NO WARRANTY. FOR INDEPENDENT PROPERTY SIZE, LAYOUT, DIMENSIONS, ANY DETAILS, VERIFICATION IS RECOMMENDED.

RE/MAX PREMIER PROPERTIES EACH OFFICE INDEPENDENTLY OWNED AND OPERATED



4201 Pennsylvania Ave., #13, La Crescenta

3D SUBMITTER www.4201PennsylvaniaA3.com



Jerry Sun 孫  
626.589.0997  
www.jerrysun.com  
ChineseBuyLA.com 中文網站

DRE#01338788  
626.602.3978  
jerrysun@remax.net  
224 N. Lake Ave, Pasadena

f t s g+ ID: jerrysun





LIVING ROOM



KITCHEN



DINING AREA



MASTER BEDROOM



SECOND BEDROOM



MASTER BATHROOM



THIRD BEDROOM



SECOND BATHROOM



IN-UNIT LAUNDRY



(PER BUILDER'S RECORD)



3 BEDROOMS



2.5 BATHROOMS



1,689 SQ. FT.



2-CAR ATTACHED



2019



IN-UNIT



\$242 /MONTH



2 BALCONIES



COMMUNITY YARD



GLENDALE UNIFIED

This contemporary craftsman style Penn Court townhome community is situated in the prestigious Crescenta Highlands neighborhood, with renowned city services and a top-rated school district. This community is noted for its exquisite architectural exterior wood detailing design and was built in 2019 by award-winning Gangi Development. It borders the city of Glendale and you will be able to enjoy this ideally positioned home with all the living conveniences and an array of leisure activities nearby. It is located close to top-performing schools, the Crescenta Valley Regional Park, supermarkets, banks, retail stores, The Marketplace Shopping Center, La Crescenta Library, public transportation, hiking and mountain bike trails. There is easy access to Glendale, Pasadena, Burbank, and DTLA via the 210 freeway.

This two-story townhome boasts a well-laid floor plan that was thoughtfully finished with high-end materials and modern elements. It contains three bedrooms, 2.5 bathrooms, living room, kitchen, dining room, combining to approximately 1,689 square feet of living space. (Per builder's record) It also features central A/C, a Ring doorbell, two balconies, in-unit laundry with a skylight, recessed lighting, lighting fixtures, plantation shutters, luxury vinyl plank flooring, and direct access two-car attached garage.

You'll love the free-flowing open area on the main level, highlighting its spaciousness. The inviting living room is filled with an abundance of natural light. The well-appointed kitchen is complete with stainless steel appliances, bright white cabinetry, a solid surface stone countertop, tile backsplash, a large center island with bar-style seating, providing the perfect backdrop for your culinary adventures. Enjoy the lovingly prepared meal in the adjoining dining area with room to host family dinners or holiday gatherings. A powder room is on the same level.

This minimalist style home feels serene and warm, the second floor living area is generous with three sizable bedrooms with carpeting flooring throughout. The laundry area with a skylight is also conveniently located upstairs. Find your solace in the opulent master suite complete with a large walk-in wardrobe, and the master bathroom that includes a dual bowl round vessel sink vanity, and a walk-in floor-to-ceiling shower room with modern soaking tub combos for ease and comfort. As well as a private balcony providing views of the surrounding green space. The second and third bedrooms have mirrored sliding closets and share a large balcony.

Unlimited harmonious relaxation awaits when you step outside to the community front yard, there is also a community pet-friendly green lawn area with a dog waste station. Fulfill your desire for a newer move-in-ready home that is stylish with open and flexible living spaces, and take pleasure in truly comfortable living.

The home owner association fee (HOA fee and cover details are subject to change without notice, the purchaser would need to verify with the association.)