



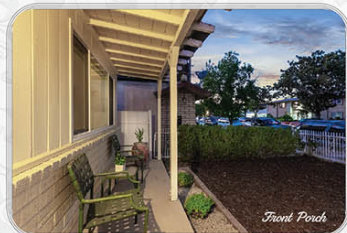
南來北往交通便捷  
簡約清新舒適家居

百貨商場機能完善  
新手購屋入門首選

便利生活觸手可及  
創造幸福美感旋律



3D DOLLHOUSE VIEW



Front Porch



Aerial View

RE/MAX PREMIER PROPERTIES EACH OFFICE INDEPENDENTLY OWNED AND OPERATED

ALL MEASUREMENTS AND FIGURES ARE APPROXIMATE. THE BROKER DOES NOT GUARANTEE THE ACCURACY OF SQUARE FOOTAGE, LOT SIZE, OR OTHER INFORMATION CONCERNING THE CONDITION OF FEATURES OF PROPERTY PROVIDED BY SELLER OR OBTAINED FROM PUBLIC RECORDS OR OTHER SOURCES, AND THE BUYER IS ADVISED TO INDEPENDENTLY VERIFY THE ACCURACY OF THAT INFORMATION THROUGH PERSONAL INSPECTION AND WITH APPROPRIATE PROFESSIONALS. PICTURES HAVE BEEN COMPUTER ENHANCED AND/OR ALTERED. \*OUR 3D FLOOR PLAN RENDERING ARE PROVIDED FOR INFORMATION AND REFERENCE ONLY. THE LISTING AGENT OR RE/MAX PREMIER PROPERTIES MAKE NO WARRANTY. FOR INDEPENDENT PROPERTY SIZE, LAYOUT, DIMENSIONS, ANY DETAILS, VERIFICATION IS RECOMMENDED.



841 W. Mines Ave, Montebello



www.841Mines.com



RE/MAX  
PREMIER PROPERTIES  
Broker DRE#01379606

📞 Jerry Sun 孫  
📞 626.589.0997  
🌐 www.jerrysun.com  
🌐 ChineseBuyLA.com 中文網站

📞 DRE#01338788  
📞 626.602.3978  
📧 jerrysun@remax.net  
📍 224 N. Lake Ave, Pasadena

📱 ID: jerrytsun







LIVING ROOM



KITCHEN



DINING ROOM



FIRST BEDROOM



SECOND BEDROOM



FULL BATHROOM



DEN (Can be used as bedroom/ Office)



LAUNDRY AREA



[ PER ASSESSOR'S RECORD ]



2 BEDROOMS



1 BATHROOM



858 SQ. FT.



2-CAR DETACHED



1962



3,116 SQ. FT.



LAUNDRY



DEN



PATIO

### LOCATION, CONVENIENCE, GREAT STARTER'S HOME, MOVE-IN READY!

This one-level single-family home is situated in the South Montebello neighborhood. The home is flanked by a large front yard with a fenced gate, and a rear alley access detached two-car garage. Experience this ideally positioned home coupled with every living convenience within easy reach. The home is near schools, banks, supermarkets, pharmacies, several recreation parks, restaurants, The Shops at Montebello, AMC cinema, Target, Costco, retail stores, Montebello Barnyard Zoo, golf course, and easy access to freeways, public transportation, and the Metrolink station.

As you approach the lovely front porch, you will be welcomed by the warm ambiance that emanates from this mid-century home. The interior features two bedrooms, one full bathroom, a living room, dining room, kitchen, laundry area, and den, totaling approximately 858 square feet of living space.

The spacious living room has hardwood flooring and oversized windows that provide generous natural lighting, creates a welcoming living environment. The gourmet kitchen features elegant white cabinetry, red cherry ceramic tile counter-tops, and tile flooring to fulfill any chef's needs.

Intimate homemade meals can be thoroughly enjoyed in the adjacent dining room. The laundry area with storage cabinets is conveniently in the hallway. The house has two cozy bedrooms with carpeted flooring and ceiling fans with lights, and one full bathroom with a granite vanity and a framed glass shower door with tiled wall and bathtub enclosed.

Additionally, there is a multi-purpose den, which can transition to fit a variety of your family's needs; it can serve as home office or an additional bedroom, and it opens to the covered patio and provides flawless integration of outdoor and indoor entertainment space, makes summer entertaining and alfresco dining exceptional. Don't miss out on this great opportunity to own this home.