



Backyard



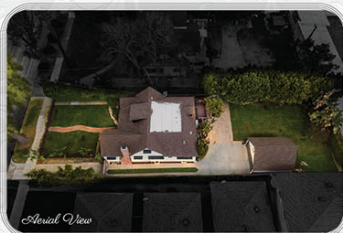
Backyard Deck



Laundry Room



Basement



Aerial View



3D FLOOR PLAN



3D DOLLHOUSE VIEW



綠意盎然寬敞庭院
便利生活觸手可及
雅緻品味機能隔局
尊雅獨享精品華宅
演繹生活夢想家居

RE/MAX PREMIER PROPERTIES EACH OFFICE INDEPENDENTLY OWNED AND OPERATED

ALL MEASUREMENTS AND FIGURES ARE APPROXIMATE. THE BROKER DOES NOT GUARANTEE THE ACCURACY OF SQUARE FOOTAGE, LOT SIZE, OR OTHER INFORMATION CONCERNING THE CONDITION OF FEATURES OF PROPERTY PROVIDED BY SELLER OR OBTAINED FROM PUBLIC RECORDS OR OTHER SOURCES, AND THE BUYER IS ADVISED TO INDEPENDENTLY VERIFY THE ACCURACY OF THAT INFORMATION THROUGH PERSONAL INSPECTION AND WITH APPROPRIATE PROFESSIONALS. PICTURES HAVE BEEN COMPUTER ENHANCED AND/OR ALTERED BY JERRY SUN'S HOME SELLING TEAM 2020 *OUR 3D FLOOR PLAN RENDERINGS ARE PROVIDED FOR INFORMATION AND REFERENCE ONLY. JERRY SUN'S HOME SELLING TEAM OF RE/MAX PREMIER PROPERTIES MAKE NO WARRANTY. FOR INDEPENDENT PROPERTY SIZE, LAYOUT, DIMENSIONS, ANY DETAILS, VERIFICATION IS RECOMMENDED



772 N. Raymond Ave, Pasadena



www.772Raymond.com



Broker DRE#01379606

Jerry Sun 孫
626.589.0997
www.jerrysun.com
ChineseBuyLA.com 中文網站

DRE#01338788
626.602.3978
jerrysun@remax.net
224 N. Lake Ave, Pasadena

Facebook, Twitter, YouTube, Instagram, LinkedIn, ID: jerrysun





DINING ROOM



KITCHEN



GRAND MASTER SUITE



GRAND MASTER BATHROOM



JUNIOR MASTER SUITE



THIRD BATHROOM



READING NOOK



HOME OFFICE



THIRD BEDROOM



SECOND BATHROOM



(PER ASSESSOR'S RECORD)



4 BEDROOMS



3 BATHROOMS



2,743 SQ.FT.



2-CAR DETACHED



1923



8,915 SQ. FT.



OFFICE



PATIO



DECK

This charming English Tudor single-family home is situated in the tranquil North Marengo neighborhood of North Central Pasadena. The home boasts a large fence front yard and a detached two-car garage with a long driveway capable of accommodating additional parking. The new owner will enjoy an array of leisure and conveniences at this home located just minutes away from schools, local recreation parks, pharmacies, a public library, supermarkets, the Rose Bowl Stadium, a golf club, museums, business district, historic Route 66, and Old Town Pasadena. Nearby are various restaurants, retail shops, cafes, and banks, as well as easy access to the 210 freeway and public transportation, and several notable venues and areas.

The home is truly eye-catching from every corner - traditional yet modern finishes that retain the original charisma and long-standing craftsmanship, uniquely embodied character and charm inside and out. It delivers a quintessential Californian lifestyle and a well-designed living environment. The interior features four bedrooms, three bathrooms, a living room, dining room, kitchen with breakfast nook, laundry room, office, and reading nook. The property also features a newer water sewer, central A/C, alarm system, French doors, plantation shutters, brand new automatic sprinkler system, engineered hardwood flooring, brilliant lighting fixtures, and recently painted interior and exterior to blend in beautifully with its overall fresh look.

As you enter through the front covered patio that leads into this architecturally distinctive home, you will be immediately welcomed by a spacious living room that features an entry door with sidelights, a wood-burning brick fireplace, an aesthetic barrel-vaulted ceiling, and lots of windows that provide generous natural lighting. Enjoying a candlelit homemade dinner with your family in the formal dining room will be delightful. The updated kitchen accentuates both style and practicality. It is well-appointed with ample cabinetry, recessed lighting, black granite countertops, stainless steel appliances, and a breakfast nook, making it a comfortable workspace to fulfill any cook's needs. The laundry room is conveniently located off the kitchen with access to the basement which has plentiful storage space for the household.

There are three comfortably sized bedrooms on the main level, with one being the junior master bedroom. It has an upgraded ensuite bathroom and accesses the enclosed outdoor deck for a flawless integration of outdoor/ indoor entertainment space for ultimate relaxation. You will be truly impressed by the entire second level which encompasses an open layout living quarter, providing an unmatched level of privacy. The grand master suite contains a stained-glass window seat bench area, a home office favorable to work in, walk-in wardrobe, functional nook, and a luxurious resort-style master bathroom that features a large soaking tub, toilet area, Victorian double sink vanity, and a separately frameless shower room that will undoubtedly help you recuperate with after-work relaxation.

Spend leisurely afternoons on the wooden deck and expansive private backyard surrounded by birdsong and a wide variety of native plants and fruit trees, while basking in the fragrant scent of fresh plants that fills the air. The outdoor space offers a perfect spot for unlimited harmonious relaxation or alfresco and makes entertaining a breeze. Don't miss out on the exceptional opportunity to take pleasure in the tranquil living neighborhood.