

### 優質地段頂級學區 便利生活觸手可及 靜謐社區機能格局 新手購屋入門首選

這棟精美的康斗社區坐落於最搶手熱門的南帕薩迪納市，靠近南邊方向的寧靜街區，還擁有可進入屢獲全美國金鐘獎項榮譽優質的南帕薩迪納聯合學區，新屋主將可以盡情享受到專屬南帕薩迪納市豐富文化特色及生活悠閒的格調，以及這裡優越地理所帶來的舒適和無與倫比的生活機能，靠近學校、市立公共圖書館、當地休閒公園、咖啡館、各式風味餐館、生鮮超市、許多零售商店、購物中心都近在咫尺，距離歷史悠久的Mission West市區也很近，便利完善措施絕對可以滿足您高品質生活需求，四通八達的公共交通網，輕鬆進出110國道高速公路和地鐵黃金線都極為方便。這棟兩層樓的康斗社區總共有16個單位，社區走道兩側設有綠意盎然修剪整齊的庭院圍牆景觀，這棟康斗位於地面層及公共洗衣房旁邊的單位，內部格局則設有2間臥室和1.75衛浴室，客廳、廚房、飯廳，總計1,036平方英尺的生活空間。屋內還備有白色漆木百葉窗，中央空調系統，複合式木地板和可停放一輛車的獨立車庫。您一定會喜歡寬敞舒適的客廳，開放格局最適合家庭生活或休閒娛樂，多機能設計對於在家工作的上班族也是十分適合，將辦公與居家空間結合的完美格局結構；玻璃推拉門可進入有屋頂遮蔽的前面庭院，是您忙碌工作後放鬆讀本好書或享受沉浸悠閒的好地點，或可在和煦的夏日夜晚享受戶外內用餐的樂趣。美食廚房提供充足的優質白色櫥櫃、石英檯面，防水瓷磚後牆板，和易於維護的寬磚地板，這裡設備齊全讓您烹飪更得心應手，舒適的空間讓料理時不再倉促，更展現您與親人的生活品味，能夠滿足任何廚師的需求，和您親愛的家人在吧檯的飯廳享用晚餐，或舉辦邀請小酌歡聚的居家派對地，品嚐美食佳餚，體驗簡單就是幸福最暖心的時刻，共創全家人共同記憶的故事。這裡有二間大小合宜溫馨的臥室及1.75衛浴室（其中一間有浴缸，一間為淋浴），兩間臥室皆有二個衣櫃壁櫥，主臥套房並設有專用衛浴室，此外走廊上還有額外的壁櫥存儲空間。如果您嚮往生活在一個融有豐富文化藝術特色的城市，還享有極佳生活悠閒的生活方式，那麼這裡對您來說絕對是您最佳首選，這裡可以說是結合購物、娛樂、放鬆的好地點，讓您可以享受南帕薩迪納這個城市完善機能設施所附加的優質生活品質，您還在等什麼呢？千萬不要錯過這個難得一睹的絕佳格局視圖及側面圖有更多角度/中英文詳細介紹/3D實景照片/專業照片/專業影片/專業音響/3D立體格局視圖及側面圖，請電洽Re/Max地產公司全美國2018年排名第百大經紀Jerry孫 626-589-0997

RE/MAX PREMIER PROPERTIES 3D FLOOR PLAN RENDERINGS ARE PROVIDED FOR INFORMATION AND REFERENCE ONLY. JERRY SUN OF REMAX PREMIER PROPERTIES MAKE NO WARRANTY. FOR INDEPENDENT SIZE, DIMENSIONS, ANY DETAILS, VERIFICATION IS RECOMMENDED.



## 1133 Pine St. #104, South Pasadena



www.1133Pine.com

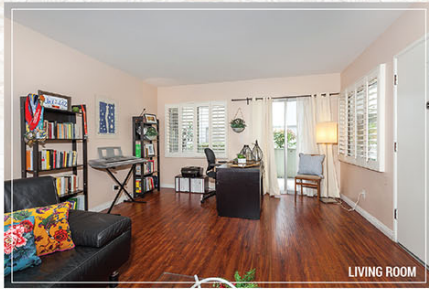


👤 Jerry Sun 孫  
☎ 626.589.0997  
🌐 www.jerrysun.com  
📍 ChineseBuyLA.com 中文網站

🏠 DRE#01338788  
☎ 626.602.3978  
✉ jerrysun@remax.net  
📍 224 N. Lake Ave, Pasadena

📱 f 📱 t 📱 s 📱 y 📱 i 📱 n 📱 ID: jerrytsun





LIVING ROOM



KITCHEN



DINING AREA



SECOND BEDROOM



MASTER BEDROOM



MASTER BATHROOM



BATHROOM



PATIO



[ PER ASSESSOR'S RECORD ]



2 BEDROOMS



1.75 BATHROOMS



1,036 SQ. FT.



1-CAR DETACHED



1962



\$400 PER MONTH



CENTRAL



SOUTH PASADENA UNIFIED

This condo complex is situated on a tranquil street in the highly desirable South Pasadena SW neighborhood, with access to the national Gold Ribbon award-winning South Pasadena Unified School district. The new owner will definitely find joy in the urban lifestyle and characteristics of this home, which is in close proximity to great schools, the South Pasadena public library, local recreation parks, cafes, retail shops, farmer's market and the historic Mission West district shopping and dining precinct. It is also commuter friendly with easy linkage to major freeways, public transportation, and Metro Gold Line.

This two-story condo complex has a total of 16 units, with manicured landscaping flanking the walkway, offering a tranquil atmosphere. This unit is conveniently located on the ground level and next to the common laundry room. The interior features two bedrooms and two bathrooms, a living room, kitchen and dining area. The property also features plantation shutters, central A/C, laminate wood flooring, and assigned, one-car parking detached garage.

The spacious living room offers plenty of open space and is equally well suited for casual entertaining or simply relaxation. The functional layout is also a perfect live/work space for at-home professionals. You can step outside to the enclosed covered patio for peaceful contemplation or dining alfresco. The gourmet kitchen offers ample white cabinetry, Caesarstone quartz countertops, subway tile backsplash, and tile flooring, making the kitchen a comfortable workspace. Enjoying intimate homemade meals will be delightful in the adjacent dining area.

The home is comprised of two bedrooms and two bathrooms. Each bedroom has his & her wardrobes, and the master bedroom has an en-suite bathroom with a shower room. There is also additional closet space in the hallway. This home combines simplicity of planning with everyday living and is superbly situated to take advantage of unlimited opportunities for shopping, entertainment, relaxation and networking for an effortless lifestyle that the city of South Pasadena offers. This property is truly a perfect starter home and also an extraordinary investment opportunity.