



330 CORDOVA ST. #354, PASADENA



www.330Cordova354.com

ID: jerrytjsun



RE/MAX Premier Properties Broker CalBRE#0 1379606
 Agent CalBRE#01338788
Jerry Sun 孫傑瑞
 626.589.0997
 www.jerrysun.com
 ChineseBuyLA.com 中文網站
 jerrysun@remax.net
 913 E. Walnut St, Pasadena, CA 91106



Community Amenities



MAIN LEVEL

3D DOLL-HOUSE VIEW



3D FLOOR PLAN 立體格局視圖



微信公眾號





PROPERTY FEATURES
Per Assessor's Profile

- 2 BEDS 2 BATHS + DEN
- LIVING AREA: 1,290 SQ.FT.
- HIGH CEILING
- 2-CAR PARKING SPACES
- BONUS ATTIC BEDROOM
- TWO FIREPLACES
- CENTRAL A/C
- HOA FEE \$578.16 per month

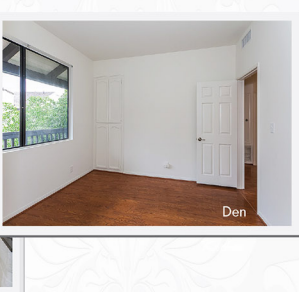
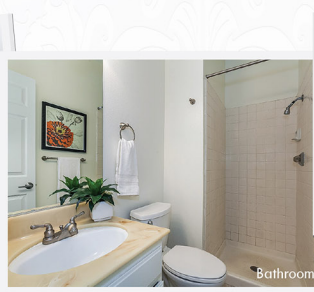
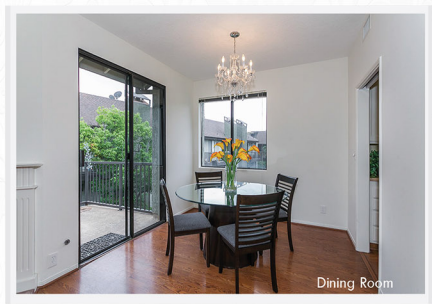
This exquisite condominium complex is situated in the prestigious Cordova Park Villas of Pasadena. It's perfectly positioned within close proximity to schools, Old Town Pasadena, Paseo Colorado, Pasadena Playhouse, Convention Center, and South Lake Avenue shopping district with a variety of restaurants, retail shops, entertainment, supermarkets, and restaurants, enjoys easy access to the 210 freeway and Del Mar Metro Gold Line to Downtown LA. You would be perfectly positioned near the very finest of Pasadena.

The interior of this home features 2 bedrooms and 2 bathrooms, a living room, kitchen with eat-in area, dining room, den, loft and in-suite laundry, combining for approximately 1,290 square feet of living space. As well as 2 subterranean side-by-side parking spaces, a balcony and a rooftop terrace. The property is equipped with central A/C and heating, ceiling fans, laminate wood flooring, and sufficient storage space for your household.

The contemporary living room features high vaulted ceiling, wet bar, and cozy fireplace with mantel, which presents a comfy atmosphere and friendly living environment. The adjacent light-filled dining room is fantastic for enjoying intimate meals with family. It also has accessibility to an encapsulated balcony that is excellent for sunbathing. The gourmet kitchen is well equipped with elegant white cabinetry, stainless steel appliances and an eat-in area. You'll find a functional den, which is perfectly set up to serve as a family room that is flawlessly designed to entertain guests or can be utilized as a bedroom.

The main level boasts of two bedrooms with newer carpeting. The appealing master bedroom features a gas fireplace, his and her closets and an en-suite master bathroom with a dual sink vanity, frameless glass shower room and separate bathtub. The laundry area is also conveniently situated on the main level. Upstairs, you'll find a loft that can be utilized as a home office or study room, and having access to the enclosed roof top terrace perfect for relaxing on. In addition, there is an estimated 300 sq. ft. bonus attic bedroom together with a bathroom, that is not integrated into the square footage. It can be transformed into the ideal space for entertainment or function as an additional bedroom. You'll certainly enjoy this multi-purpose room!

This secured entry complex was built in 1981. It provides its inhabitants with a beautifully landscape, on-site manager, underground guest parking, elevators access, pool, spa, sauna room, fitness center, as well as a large recreation room with sofa, kitchen and pool table, flawlessly built to gratify your entertaining expectations. This community provides all of the conveniences required for the finest in lifestyle and the very best of comfort, thus creating a distinctively refreshing way of life. It is indeed an excellent starter home or a great investment opportunity.



EACH OFFICE INDEPENDENTLY OWNED AND OPERATED ***ALL MEASUREMENTS AND FIGURES ARE APPROXIMATE. THE BROKER DOES NOT GUARANTEE THE ACCURACY OF SQUARE FOOTAGE, LOT SIZE, OR OTHER INFORMATION CONCERNING THE CONCERNING THE CONDITION OF PROPERTY PROVIDED BY SELLER OR OBTAINED FROM PUBLIC RECORDS OR OTHER SOURCES, AND THE BUYER IS ADVISED TO INDEPENDENTLY VERIFY THE ACCURACY OF THAT INFORMATION THROUGH PERSONAL INSPECTION AND WITH APPROPRIATE PROFESSIONALS. PICTURES HAVE BEEN COMPUTER ENHANCED AND/OR ALTERED BY@JERRY SUN'S HOME SELLING TEAM 2017 *OUR 3D FLOOR PLAN ARE PROVIDED FOR INFORMATION AND REFERENCE ONLY. JERRY SUN'S TEAM OF RE/MAX PREMIER PROPERTIES MAKE NO WARRANTY. FOR INDEPENDENT PROPERTY SIZE, LAYOUT, DIMENSIONS, ANY DETAILS, VERIFICATION IS RECOMMENDED.