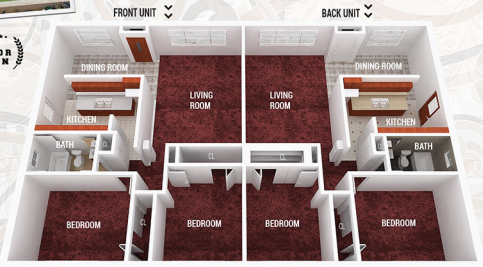




2700-2702 Strathmore Ave, Rosemead



www.2700strathmore.com



Jerry Sun's
FIVE STAR
 REALTOR
 (610) 588-8888
 OFFICIAL ACCOUNT
 關注孫傑強專業地產團隊
 微信公眾號: jerryssunteam

ROSEMEAD



DUPLEX



RE/MAX
 PREMIER PROPERTIES
 Broker CalDRE#1379606

- 📞 Jerry Sun 孫
- 📞 626.589.0997
- 📧 www.jerrysun.com
- 🌐 ChineseBuyLA.com 中文網

- 📍 CalDRE#01338788
- 📞 626.602.3978
- 📧 jerrysun@remax.net
- 📍 913 E. Walnut St, Pasadena

Facebook, WeChat, Line, YouTube, Instagram, Twitter, LinkedIn, 8** ID: jerrytsun

RE/MAX Premier Properties • EACH OFFICE INDEPENDENTLY OWNED AND OPERATED • 913 E WALNUT ST, PASADENA, CA 91106
 ALL MEASUREMENTS AND FIGURES ARE APPROXIMATE. THE BROKER OR LISTING AGENT DOES NOT GUARANTEE THE ACCURACY OF SQUARE FOOTAGE, LOT SIZE, OR OTHER INFORMATION CONCERNING THE CONDITION OR FEATURES OF PROPERTY PROVIDED BY SELLER OR OBTAINED FROM PUBLIC RECORDS OR OTHER SOURCES, AND THE BUYER IS ADVISED TO INDEPENDENTLY VERIFY THE ACCURACY OF THAT INFORMATION THROUGH PERSONAL INSPECTION AND WITH APPROPRIATE PROFESSIONAL SERVICES. PICTURES HAVE BEEN COMPILED, FINANCED, AND/OR ALTERED FOR 3D FLOOR PLAN RENDERINGS. ARE PROVIDED FOR INFORMATION AND REFERENCE ONLY. JERRY SUN'S HOME SELLING TEAM OF RE/MAX PREMIER PROPERTIES MAKE NO WARRANTY FOR INDEPENDENT PROPERTY SIZE, LOT SIZE, DIMENSIONS, ANY OTHER DETAILS, VERIFICATION IS RECOMMENDED.



2700 STRATHMORE AVE, ROSEMEAD



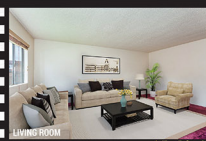
4 BEDROOMS



2 BATHROOMS



1,870 SQ.FT.

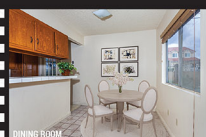


LIVING ROOM

▲ Virtually Staged



KITCHEN



DINING ROOM

▲ Virtually Staged



BEDROOM

▲ Virtually Staged



BATHROOM



BEDROOM

This two-unit duplex is situated in the extremely convenient Garvey neighborhood of Rosemead. Within close proximity to Garvey Blvd and San Gabriel Blvd, with a variety of restaurants, retail stores, supermarkets, pharmacies, banks, and local parks. Only a few minutes away from schools, WalMart Supercenter, and Whittier Narrows Golf Course, along with easy access to the 10 freeway and accessibility to the top-rated San Gabriel High School. The neighborhood offers unlimited opportunities for shopping, entertainment, relaxation, and networking. It's an ideal location to generate rental income.

This duplex sits on an enormous 12,200 square-foot lot. Built in 1964, it features a total of four bedrooms and two bathrooms, combining for approximately 1,870 square feet of living space across both units. Each unit consists of two bedrooms, one bathroom, living room, kitchen and dining room, and each unit has its own meter for gas and electricity. In addition, it boasts a 2-car carport parking and a storage room.

The potential for this property is extremely hard to match in today's market. It awaits you as a live-in owner while renting the other unit to serve as a cash flow income property, making it an excellent investment opportunity. This is a great property with tons of upside rental potential that can complement your investment portfolio.

Interested parties should perform their own due diligence to verify and satisfy all requirements regarding current market rent value. On all future expansion possibilities and necessary permits, please verify with the city authority.

Front Unit- Living Room/ Dining Room/ Bedroom photos have been virtually staged. 前面單位的客廳、飯廳、臥室的照片均經過3D電腦虛擬置入假家具擺設供買主參考用。

2702 STRATHMORE AVE, ROSEMEAD

*Per Assessor's Record



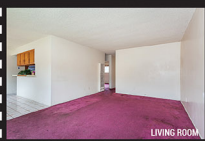
12,200 SQ.FT.



1964



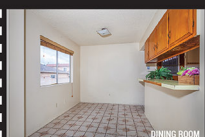
2-CAR CARPORT



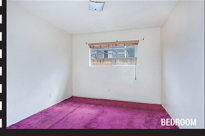
LIVING ROOM



KITCHEN



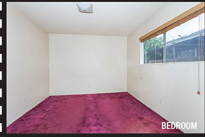
DINING ROOM



BEDROOM



BATHROOM



BEDROOM

這棟兩個單位組合住宅位於柔佛靈市 (Rosemead) 一個絕佳地理位置便利的街區，這裡離加菲爾大道 (Garvey Blvd) 及聖蓋博大道 (San Gabriel Blvd) 都很近，生活機能十分便利，附近擁有各式各樣的便利設施，包括：餐館、零售商店、銀行、連鎖藥局、超市等。距離學校、沃爾瑪超市 (Walmart Supercenter)、惠提爾高爾夫球場 (Whittier Narrows Golf Course) 都僅有幾分鐘之遙，前往10號高速公路也很方便。此外還可進入優質的聖蓋博高中，這裡可以說是最適合購物、時尚、娛樂、放鬆的好地點，讓您享受柔佛靈市所提供的所有舒適和便利，也可說是真正最理想買來投資租賃收入完美地點。

這棟兩戶組合單位建於1964年，佔地廣闊共計12,200平方英尺 (sq.ft)，前後二個單位加起來總計有4間臥室和2間衛浴室，室內面積合計大約為1,870平方英尺 (sq.ft)。每個單位格均設有各2間臥室、1個衛浴室、客廳、廚房和飯廳。每個單位也擁有屬於自己評價的電錶和煤氣錶。此外還有可停放2台車的停車棚和儲藏室。

這棟極具出租潛力及位置優越的兩個單位，正等著您來擁有它。您可以居住在其中一個單位，然後將另一戶出租把它作為投資，或者簡單裝修再出租。有意願買主請自行調查目前市場租金的行情價，關於未來擴展可能性及相關事宜和必需的批准證，請逕行向市府查詢細節。

歡迎到中英文雙語內容房屋專屬網站：
www.2700strathmore.com 有親臨實境3D背景互動看屋/影片加語音導覽/3D立體格局視圖及剖面圖有更多角度/中英文詳細介紹/空拍照片/專業照片/地圖及更多資訊。

預約看屋或您想賣房買房請找孫傑瑞專業團隊，帕薩迪那市商業評選最佳前三名地產經紀人及洛杉磯市連續多年榮獲五顆星頂尖專業經紀，Re/Max公司2017年全美最高首席鑽石獎項得主。同時也是Re/Max全加州總排名第16名經紀人團隊。請來電 **Jerry Sun 孫 626.589.0997** 或上網到 www.jerrysun.com

3D FLOOR PLANS ARE PROVIDED FOR INFORMATION PURPOSES ONLY. BUT WE MAKE NO WARRANTY. 3D 樓房視圖所有細節均根據實際圖紙為準，本公司及代理經紀人，不提供任何印上之樓房視圖參考使用。