



1900 PEPPER ST. #1, ALHAMBRA



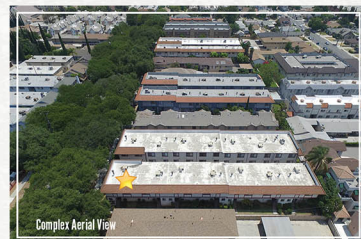
www.1900Pepper.com

ID: jerrytjsun



RE/MAX Premier Properties
 Broker CalBRE#01379606
 Agent CalBRE#01338788

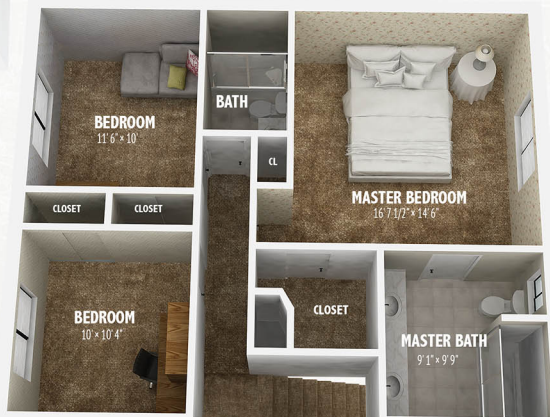
- Jerry Sun 孫傑瑞
- 626.589.0997
- www.jerrysun.com
- ChineseBuyLA.com 中文網站
- jerrysun@remax.net
- 913 E. Walnut St, Pasadena, CA 91106



3D FLOOR PLAN



MAIN LEVEL



微信公眾號



3D DOLL-HOUSE VIEW





- 3 BEDS 2.5 BATHS
- LIVING AREA: 1,377 SQ.FT.
- HOA \$138 PER MONTH
- CENTRAL A/C
- LIVING ROOM W/ FIREPLACE
- 2-CAR ATTACHED GARAGE

This condominium complex is located on a friendly and tree-lined street in a desirable neighborhood of Alhambra. The new owner will definitely joy in the urban lifestyle and characteristics of this home situated in a very close proximity to Target, Costco, Alhambra Park, Alhambra Market, schools, Home Depot, and only minutes away from Downtown Alhambra with a variety of retail shops, supermarkets, restaurants, banks, entertainment, and cinemas. Enjoy easy access to public transportation and major freeways to Downtown LA. You will be perfectly situated near the exceedingly best of what Alhambra can offer.

You are afforded extra privacy at this secured entry end-unit condo. The interior features 3 bedrooms and 2.5 bathrooms, a living room, kitchen, dining room, combining for approximately 1,377 square feet of living space, as well as a 2-car attached garage with direct access. The property features central A/C & heating, the interior has been freshly painted, completely new smoke alarms and Carbon Monoxide Alarms fitted in rooms. This unit was the original "Model Home" by builders with improvements and custom wallpaper all through.

Entering the entrance garden area leading into this lovely home, you will be immediately welcomed by a spacious living room that radiates warmth and style with a fireplace and floor-to-ceiling oversize windows that illuminate the interior with an abundance of natural light and provide comfortable atmosphere and pleasant living environment. The chef-friendly kitchen offers a breakfast bar, ceramic tile countertops, and easy to maintain tile flooring. Enjoy intimate meals with your family in the adjacent gracious dining room. It offers new lighting fixtures, built-in wall unit with lower storage cabinets and upper book and display shelving. Additionally, a wet bar with sink connection between the living room and dining room.

The top level consists of 3 bedrooms with carpeting flooring. The inviting master bedroom is graced with beautiful wallpaper and matching drapes and an en-suite master bathroom with sizable dual sink vanity with makeup area and a framed-glass shower room. All bathrooms have been updated with new plumbing valves, toilets, faucets, and other fixtures you'll definitely love. This functional and move-in ready home was exquisitely designed with an environment of elegance and has been lovingly cared for and maintained, gently used by one family and never rented! It offers the finest in lifestyle and ultimate comfort, truly an ideal home for homebuyers and also a perfect investment opportunity. Don't miss out on this rare opportunity to own this wonderful home.

GREAT LOCATION CONDO

WEBSITE: www.1900Pepper.com



LIVING ROOM

KITCHEN

DINING ROOM

MASTER BATHROOM

MASTER BEDROOM

SECOND BEDROOM

SECOND BATHROOM

THIRD BEDROOM

MAIN LEVEL BATHROOM

EACH OFFICE INDEPENDENTLY OWNED AND OPERATED ***ALL MEASUREMENTS AND FIGURES ARE APPROXIMATE. THE BROKER DOES NOT GUARANTEE THE ACCURACY OF SQUARE FOOTAGE, LOT SIZE, OR OTHER INFORMATION CONCERNING THE CONCERNING THE CONDITION OF FEATURES OF PROPERTY PROVIDED BY SELLER OR OBTAINED FROM PUBLIC RECORDS OR OTHER SOURCES, AND THE BUYER IS ADVISED TO INDEPENDENTLY VERIFY THE ACCURACY OF THAT INFORMATION THROUGH PERSONAL INSPECTION AND WITH APPROPRIATE PROFESSIONALS. PICTURES HAVE BEEN COMPUTER ENHANCED AND/OR ALTERED BY JERRY SUN'S HOME SELLING TEAM 2017 *OUR 3D FLOOR PLAN RENDERINGS ARE PROVIDED FOR INFORMATION AND REFERENCE ONLY. JERRY SUN'S HOME SELLING TEAM OF RE/MAX PREMIER PROPERTIES MAKE NO WARRANTY. FOR INDEPENDENT PROPERTY SIZE, LAYOUT, DIMENSIONS, ANY DETAILS, VERIFICATION IS RECOMMENDED.