



2107 MCPHERSON AVE, LOS ANGELES



www.2107mcpherson.com



LISTING WEBSITE FEATURES: 3D WALK-THROUGH TOUR, 3D FLOOR PLAN RENDERINGS, AERIAL PHOTOS, HD LIVE-MOTION ANIMATED VIDEO, PROFESSIONAL PHOTOS, AND MORE.



RE/MAX Premier Properties
913 E. Walnut St, Pasadena, CA 91106

JERRY SUN 孫傑瑞

626.589.0997

WWW.JERRYSUN.COM

JERRYSUN@REMAX.NET

CalBRE#01338788



3D FLOOR PLAN
立體格局視圖



這個地點佳又極具裝修/改建潛力的單層樓的獨立住宅坐落在洛杉磯市著名的Hillside Village地區，它有著寬敞的街道及綠樹成蔭的前院，街接著可停放兩台車的連接式車庫，還有私人長車道為您提供額外充足的停車空間。新屋主將可以享受到這裡完美地理位置極佳所帶來的生活機能便利，鄰近公園、學校、距離洛市市中心和地鐵黃金線都只需要幾分鐘，出入10號及710高速公路也很方便。這棟房子格局規劃設有二間臥室和一間衛浴室/客廳/廚房/飯廳/和洗衣房，合計大約有912平方英尺的生活空間。另外還有一個地下室可做為藏酒間或儲藏室為家裡提供了大量的存儲空間。這間獨立屋佔地約6,249平方英尺，後院有足夠的空間可以加建將現有房子擴建改造，或者可以吧現有的車庫改造成兩台車的庫車，或者可以重蓋新屋，起大後院創造一個完美的戶外聚會及娛樂空間。您千萬不要錯過可以用低於市價的好機會，購入這個擁有絕佳好地點又有改建潛力的美好家園，目前房子需要許多整修並以現有屋況出售，售價已反應在屋況上，這個中古世紀時期的家園是一個等待被發掘磨亮的潛力寶石，它可能會您的夢想家園或投資翻新再售良機。(買方或買方經紀需自行與洛杉磯市政府驗證所有加建擴展的可能性和必要的批准許可證) 想瞭解更多詳細資訊，請上網參觀我們中文英雙語內容專屬房屋網站：www.2107mcpherson.com 網站有親臨實境的3D實景互動看屋/影片加配音介紹動畫及空拍影片/3D立體格局視圖有更多角度/空拍照片/專業照片/地圖/及其它更多資訊。

3D FLOOR PLAN ARE PROVIDED FOR INFORMATION AND REFERENCE ONLY. JERRY SUN'S TEAM OF RE/MAX PREMIER PROPERTIES MAKE NO WARRANTY. FOR INDEPENDENT PROPERTY SIZE, LAYOUT, DIMENSIONS, ANY DETAILS, VERIFICATION IS RECOMMENDED.



PROPERTY FEATURES
Per Assessor's Profile

- 2 BEDROOMS
- LIVING AREA: 912 SQ.FT.
- BUILT IN 1950
- 1-CAR ATTACHED GARAGE
- 1 BATHROOM
- LOT SIZE: 6,249 SQ.FT.
- LARGE BASEMENT
- LAUNDRY ROOM

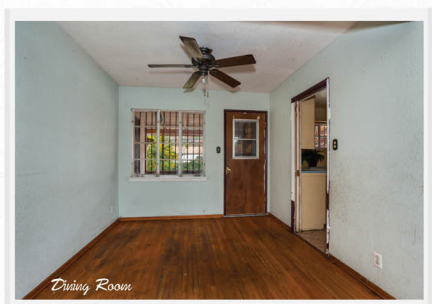
This mid-century one story single family home is situated in the prestigious Hillside Village neighborhood of El Sereno. It is framed by a wide street with large front yard and an attached 1-car garage. Also, a long driveway capable of accommodating additional parking. The new owner will enjoy a home in an ideal location close Ascot Hills Park, schools, Downtown LA, with easy access to the Cal State LA Metrolink Station, 10 and 710 freeways.

The interior of the home features two bedrooms and one bathroom, a living room, kitchen, dining room and laundry room. Altogether, combined to an approximate 912 square feet of living space. It also features a big basement that can easily be used as a wine cellar or storage room providing sufficient storage space for the household.

The home is situated on a large 6,249 square foot lot with plenty of room in the rear and offers the potential to build a brand new home or keep part of the current structure to expand and reconfigure. You could also relocate to build a two-car garage. The private backyard creates a fantastic outdoor space for gatherings or entertainment.

Don't miss this great opportunity for a perfect flip located in a great neighborhood at an exceptional value. The property is in need of lots cosmetic repairs and sold in AS-IS current condition. Price reflects the need for upgrades and repairs. This is a true diamond in the rough just waiting to be revitalized for you to make your dream home a reality.

Buyer to verify with City of Los Angeles on all expansion possibilities and necessary permits



EACH OFFICE INDEPENDENTLY OWNED AND OPERATED ***ALL MEASUREMENTS AND FIGURES ARE APPROXIMATE. THE BROKER DOES NOT GUARANTEE THE ACCURACY OF SQUARE FOOTAGE, LOT SIZE, OR OTHER INFORMATION CONCERNING THE CONDITION OF FEATURES OF PROPERTY PROVIDED BY SELLER OR OBTAINED FROM PUBLIC RECORDS OR OTHER SOURCES, AND THE BUYER IS ADVISED TO INDEPENDENTLY VERIFY THE ACCURACY OF THAT INFORMATION THROUGH PERSONAL INSPECTION AND WITH APPROPRIATE PROFESSIONALS. PICTURES HAVE BEEN COMPUTER ENHANCED AND/OR ALTERED BY@JERRY SUN'S HOME SELLING TEAM 2016