



5127 SULTANA AVE, TEMPLE CITY



www.5127sultana.com



LISTING WEBSITE FEATURES: 3D WALK-THROUGH TOUR, 3D FLOOR PLAN RENDERINGS, AERIAL PHOTOS, HD LIVE-MOTION ANIMATED VIDEO, PROFESSIONAL PHOTOS, AND MORE.



Premier Properties
913 E. Walnut St. Pasadena, CA 91106

JERRY SUN 孫傑瑞

626.589.0997

WWW.JERRYSUN.COM

JERRYSUN@REMAX.NET

CalBRE#01338788



這棟兩層樓以高品質建造的獨立屋坐落於天普市黃金地段的安靜街道，並擁有頂級的天普名校學區。鄰近學校、超級市場、Elm購物廣場，及剛完工的卡蜜拉廣場，在這裡有各種餐廳、商店、咖啡廳、銀行以及完善的公共交通工具。新屋主將可以享受便利和豪華的生活方式。這棟精心打造的客製化豪宅室內格局規劃有5個房間、4.5間衛浴間、客廳、家庭起居室、廚房、早餐用餐區、正式飯廳、閣樓和洗衣間。除此之外，還有覆蓋式的前陽台和可停放三部車的可停放三部車的连接式車庫。走進前廊進入雙機製大門，您將看到挑高的拱形天花板、美麗設計師燈具和華麗的鐵藝樓梯可通向二樓。房子內設有隱藏式照明燈、即熱式熱水器、雙中央冷氣和暖氣系統、安全攝影機、警報系統、漂亮的木質及瓷磚地板，和貫穿整棟房子的優雅白色頂冠裝飾板條和底飾防踢條及護欄。溫馨的客廳應有大理石壁爐、珠型天花板和義大利風格的吊燈，而相鄰的正式飯廳是您與家人們享受親密用餐的完美空間。寬敞開放設計概念的家庭起居室，不僅是宴客的完美場所，也是工作一天後放鬆的最佳地點，並有著格子造型天花板，予人視覺享受的同時，也營造了溫馨氛圍和愉快環境。宛如專業級的廚房有著所有美食廚師所喜愛的各種靈感設計在這裡都能找到，包括採光明亮的早餐用餐區、漂亮的典雅的古董櫥櫃、吧台、酒架、義大利花崗岩檯面、馬賽克磁磚後擋板、廚房中島的和專業的不鏽鋼廚具。主樓層設有2間房間和1個半的衛浴間及洗衣間，適合用來招待客人並為您提供絕對隱私。樓上設有3間寬敞的套房和配套浴室。氣派的主臥套房提供一個步入式大衣櫃，主衛浴室則有雙槽洗手盆和梳妝台，無框玻璃淋浴間和按摩浴缸。此外還有一樓入口還有一個多功能使用的閣樓，可做為辦公室書房或居家工作室。私人後院和露台是您家庭休閒放鬆和娛樂的完美空間，這間獨特的家結合了奢華時尚的元素和經典的建築風格。這樣理想地段的獨立華宅可以讓您享受天普市提供的最好最便利的生活方式，如果您正在尋找一個絕佳好學區地段，同時兼備舒適時尚並富有建築造詣的家，這裡絕對是您完美選擇，您千萬不要錯過擁有這個夢寐以求的美麗家園。房子專屬網站: www.5127sultana.com

3D FLOOR PLAN ARE PROVIDED FOR INFORMATION AND REFERENCE ONLY. JERRY SUN'S TEAM OF REMAX PREMIER PROPERTIES MAKE NO WARRANTY. FOR INDEPENDENT PROPERTY SIZE, LAYOUT, DIMENSIONS, ANY DETAILS, VERIFICATION IS RECOMMENDED. 孫傑瑞團隊所製提供的室內3D立體格局圖及尺寸，根據實景格局及傢俱擺設繪製，但不提供任何形式保證僅供參考，買主請需自行核實。*請到我們房子專屬網站 www.5127sultana.com 有親臨實境3D實景互動看屋/高清晰度動態視圖及空拍影片加語音導覽/3D立體格局視圖有不同角度/空拍/專業照片/地圖及其它更多資訊*



- 5 BEDROOMS
- 4.5 BATHROOMS
- LIVING AREA: 3,064 SQ.FT.
- LOT SIZE: 7,701 SQ.FT.
- BUILT IN 2013
- CENTRAL A/C
- 3-CAR ATTACHED GARAGE
- TEMPLE CITY SCHOOL DISTRICT

This two story charming and superior quality craftsmanship single family home is situated in the highly desirable neighborhood, with access to the top-rated Temple City School District. The new owner will enjoy the luxury lifestyle and conveniences of this perfect home in close proximity to schools, Kmart, Elm center shopping center and newly developed Camellia Square, with a variety of restaurants, retail stores, shops, cafe, banks and public transportation.

The meticulously design of this custom built estate has 5 bedrooms and 4.5 baths, living room, family room, kitchen, breakfast nook area, dining room, loft and laundry room. It also features a 3-car garage with security gates and cover front porch. The property also features recessed lighting, tankless water heater, double zone A/C & heater, security camera, alarm system, substantial elegant crown molding and wainscoting panels throughout the entire house.

Entering through dual iron doors, you are immediately welcomed by cathedral ceiling, designer lighting fixtures and magnificent wrought iron staircase leading to the second floor. The inviting living room features cathedral ceiling, marble fireplace, ceiling dome and Italian style chandelier. Enjoy an intimate meal with your family or friends in the adjacent dining room. The spacious open-concept family room features coffered ceilings that adds a pleasing aesthetic to the interior styling, and is flawlessly designed to entertain guests or enjoying a quiet evening at home. The gourmet kitchen offers all of the desirable features you would expect from a chef-inspired space, which includes a light-filled breakfast nook area with bay windows, sophisticated antique-finished cabinetry, wet bar with wine rack, soffit with crown molding, Italian granite countertops, mosaic tile backsplash, a center island and stainless steel appliances.

The main level has 2 bedrooms and 1.5 baths, suitable for hosting guests and providing unmatched level of privacy. Upstairs made up of 3 generously-sized suites and ensuite bathrooms. The master bedroom offers a large a closet and organizer. It comes with a luxurious master bath featuring dual vanities with makeup counter, a frameless glass shower room and separate Jacuzzi bathtub. Additionally, there is a functional Loft which is appropriately positioned to serve as a home office. The meticulously manicured backyard and covered patio offer a fantastic outdoor space for gatherings or entertainments with your family. This unique home seamlessly blending luxurious modern components and classic architectural design. It is perfect for homebuyers who are looking for a comfortable and fashionable home.



Living Room



Kitchen



Family Room



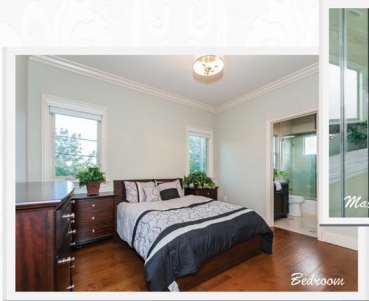
Master Bedroom



Dining Room



Loft



Bedroom



Master Bath



Bedroom



Bathroom



Eat-in area

EACH OFFICE INDEPENDENTLY OWNED AND OPERATED ***ALL MEASUREMENTS AND FIGURES ARE APPROXIMATE. THE BROKER DOES NOT GUARANTEE THE ACCURACY OF SQUARE FOOTAGE, LOT SIZE, OR OTHER INFORMATION CONCERNING THE CONDITION OF PROPERTY PROVIDED BY SELLER OR OBTAINED FROM PUBLIC RECORDS OR OTHER SOURCES, AND THE BUYER IS ADVISED TO INDEPENDENTLY VERIFY THE ACCURACY OF THAT INFORMATION THROUGH PERSONAL INSPECTION AND WITH APPROPRIATE PROFESSIONALS. PICTURES HAVE BEEN COMPUTER ENHANCED AND/OR ALTERED BY@JERRY SUN'S HOME SELLING TEAM 2016