



AERIAL VIEW



UNIT#404



FRONT PATIO



141 S. HUDSON AVE. #404, PASADENA



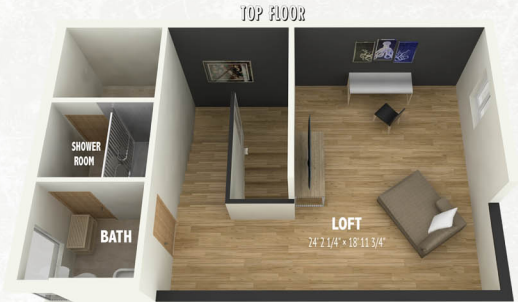
www.141SHudson.com

LISTING WEBSITE FEATURES: 3D WALK-THROUGH TOUR, 3D FLOOR PLAN, AERIAL PHOTOS, HD LIVE-MOTION ANIMATED VIDEO, PROFESSIONAL PHOTOS, FEATURES, MAP, AND MORE.

813 E Walnut St. Pasadena, CA 91108  
 LISTING AGENT: BRE#01338788  
**Jerry T. J. Sun 孫傑瑞**  
 (626) 589-0997  
 www.jerrysun.com  
 jerrysun@remax.net



3D FLOOR PLAN 室內立體格局圖



這棟精緻現代的閣樓式公寓位於帕薩迪那市中心的中央地區。這是離南湖大購物區，餐廳，零售商店，雜貨店僅有幾步之遙，並鄰近加州理工學院，帕薩迪納社區大學，帕薩迪納劇院和帕薩迪納老城區。這個社區提供了一個城市的生活方式並擁有所有現代生活所需的設施。這間豪華的住宅格局設有客廳，廚房，用餐區，小閣樓，洗衣區，3間臥室(含主臥室)，3間衛浴室，3個陽台和前院露臺，總計2,250平方英尺的生活空間，和擁有自動門可進入地下2個並排停車位的車庫。住宅還設有中央空調和暖氣，隱藏式照明，百葉窗，溫度控制和雙區中央空調，讓您在夏季也能保持涼爽。現代客廳設有超過20寸的挑高天花板，壁爐和堅實的歐洲白橡木多層實木複合地板。地板到天花板的玻璃窗戶添加了建築的吸引力和提供充足的自然陽光。還有附設的陽台可以享受觀看山景和城市景觀的便利。相鄰的用餐區，是享受與家人親密用餐的好地方。多功能廚房擁有充足的櫥櫃和早餐吧台，黑色亞光花崗岩檯面，中心島和專業級的維京不銹鋼廚具。地面層是由三間大臥室和兩間浴室組成。寬敞的主人套房包括一個步入式衣櫃，還有私人陽台俯瞰山景最適合悠閒的享受日光。主衛浴室設有一個超大玻璃淋浴房與雙水槽浴缸和雙人淋浴噴頭。第二間大臥室有兩個鑲鑽的大滑動壁櫥和與第三間臥室分享一個相通的陽台。位於最上層還有一個開放式閣樓和第三浴室，可以與家人放鬆娛樂的完美空間。它也可以被用來作為辦公室或健身房。寬敞的前院露臺配備了燒烤設施及電源插座，一個享受娛樂的完美戶外空間。這個單位是在這個社區擁有前庭院的4個單位之一。這間房屋提供了具有吸引力和高品質的現代生活。它享受帕薩迪納城市生活方式所能提供的一切。屋況維護良好可隨時入住。不要錯過這個千載難逢的機會擁有這美好的家！\*\*請到我們傳單正面提供的三個網站看屋或您可以到孫傑瑞團隊的網站www.jerrysun.com有更多資訊\*我們團隊所繪製提供的室內3D立體格局圖及尺寸，根據實景權設及實際格局去繪製但不提供任何保證僅供參考使用，可到我們網站 jerrysun.com/single\_properties/141hudson/觀看3D格局圖有更多不同角度，還有3D實景網站及高清房屋短片有配音導覽\*

JERRY SUN'S TEAM 3D FLOOR PLANS ARE PROVIDED FOR INFORMATION PURPOSES ONLY. WE MAKE NO WARRANTY. FOR INDEPENDENT PROPERTY SIZE, LAYOUT, DIMENSIONS, OR ANY OTHER DETAILS, VERIFICATION IS RECOMMENDED.



\*per title profile

*Property Features:*

- 3 BEDROOMS
- LIVING AREA: 2,250 SQ.FT
- BUILT IN 2006
- FRONT PATIO
- 2-CAR PARKING SPACES
- 3 BATHROOMS
- 3 BALCONIES
- HIGH CEILINGS
- LOFT
- HOA \$504 PER MONTH

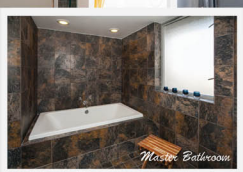
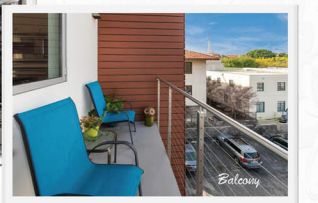
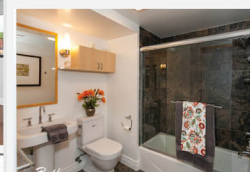
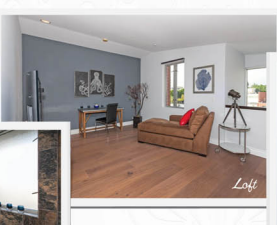
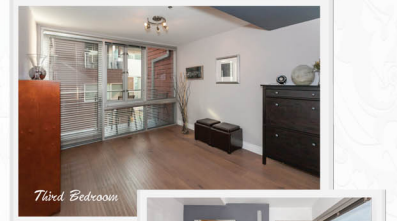
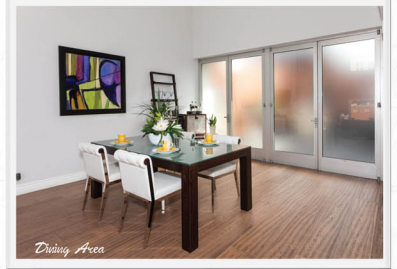
This exquisite, contemporary loft-style condo is centrally located in the heart of Pasadena. It is within walking distance of the South Lake Avenue shopping district, restaurants, retail and grocery stores, and only blocks away from Cal Tech, PCC, Pasadena Playhouse and Old Town Pasadena. This community offers an urban lifestyle and has all of the amenities required for modern living.

The interior of this luxurious home features a living room, kitchen, dining area, loft, in-suite laundry, 3 bedrooms, 3 bathrooms, 3 balconies, combining for approximately 2,250 square feet of living spaces and convenient side-by-side parking in a subterranean garage with automatic gate entry. The property also features central A/C and heating, recessed lighting, Douglas Hunter blinds, Ecobee temperature control, and dual-zone central air conditioning to keep you cool during the warm summer days.

The modern living room features over 20" tall soaring ceilings, resurfaced fireplace and solid European white oak engineered hardwood flooring throughout. The floor-to-ceiling glass windows add to the architectural appeal and provide an abundance of natural sunlight. Convenient access to the enclosed patio is afforded, where beautiful mountain views and a cityscape can be enjoyed. The adjacent dining area is perfect for enjoying intimate meals with the family.

The functional kitchen is well appointed with ample cabinetry, honed granite countertops, a center island and professional-grade Viking stainless steel appliances. The ground level is comprised of three large bedrooms and two baths. The spacious master suite comprises of a walk-in closet with access to an enclosed balcony overlooking the mountain views. The master bathroom has an oversized glass shower room with soaking tub, dual sinks and double shower heads. The large second bedroom has 2 mirrored sliding closets and shares a balcony with the third bedroom. There is a large loft with a third bathroom located on the upper level - a perfect space for relaxing and entertaining with your family. It can also be used as an office or exercise room.

The spacious front patio is fully equipped with a fire pit, barbecuing facilities, electrical outlet, water line and gas line- a perfect outdoor space for entertaining and enjoyment. It's one of only four units that feature a front patio in this prestigious community. This stylish unit offers an equally appealing view and high-quality contemporary living. It captures everything that the urban lifestyle of the City of Pasadena has to offer. Don't miss out this great opportunity to own this wonderful home!



★ ALL MEASUREMENTS AND FIGURES ARE APPROXIMATE. BROKER DOES NOT GUARANTEE THE ACCURACY OF SQUARE FOOTAGE, LOT SIZE, OR OTHER INFORMATION CONCERNING THE CONDITION OF FEATURES OF PROPERTY PROVIDED BY SELLER OR OBTAINED FROM PUBLIC RECORDS OR OTHER SOURCES, AND THE BUYER IS ADVISED TO INDEPENDENTLY VERIFY THE ACCURACY OF THAT INFORMATION THROUGH PERSONAL INSPECTION AND WITH APPROPRIATE PROFESSIONALS. PICTURES HAVE BEEN COMPUTER ENHANCED AND/OR ALTERED. BY @JERRY SUN'S HOME SELLING TEAM 2015